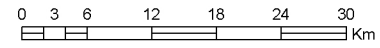
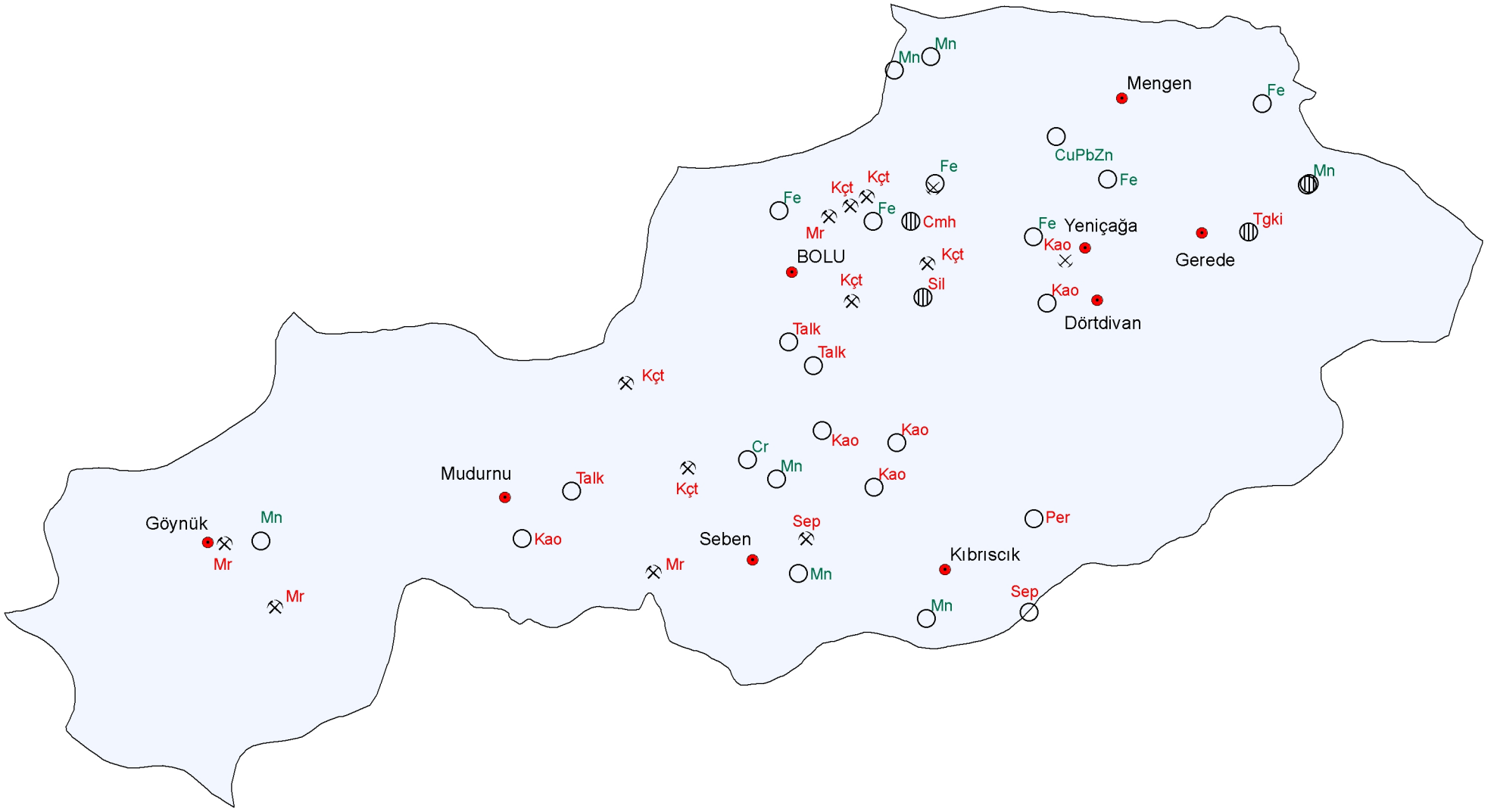
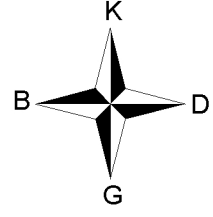


BOLU İLİ MADEN HARİTASI / MINERAL MAP OF BOLU



MADEN TETKİK ve ARAMA GENEL MÜDÜRLÜĞÜ
GENERAL DIRECTORATE OF MINERAL RESEARCH and EXPLORATION
ANKARA / TURKEY
Genel Müdür / General Director : Mehmet ÜZER
Basıma hazırlayan / Preparation of printing : Gonca GÜRLER



AÇIKLAMALAR

○ ZUHUR / EXPOSURE

⊕ YATAK / ORE DEPOSIT

⊗ İŞLETME / MINE

⊗ ESKİ İŞLETME / OLD MINE

● Yerleşim merkezi
Urban center

METALİK MADENLER
METALLIC MINERALS

ENDÜSTRİYEL HAMMADELER
INDUSTRIAL RAW MATERIALS

Cmh Çimento Hammaddeleri
Cement Raw Materials

Cr Krom
Chromite

CuPbZn Bakır-Kurşun-Çinko
Copper-Lead-Zinc

Fe Demir
Iron

Kao Kaolin
Kaolin

Kçt Kireçtaşı
Limestone

Mn Mangan
Manganese

Mr Mermer
Marble

Per Perlit
Perlite

Sep Sepolit
Sepiolite

Sif Şiferton
Shifertone

Talk Talk
Talk

Tgki Tuğla-Kiremit
Brick-Tile Building Stone